

Ground Floor

Approx. 24.7 sq. metres (265.4 sq. feet)



Total area: approx. 24.7 sq. metres (265.4 sq. feet)
For illustration purposes only - not to scale

First Floor

Approx. 19.9 sq. metres (214.5 sq. feet)

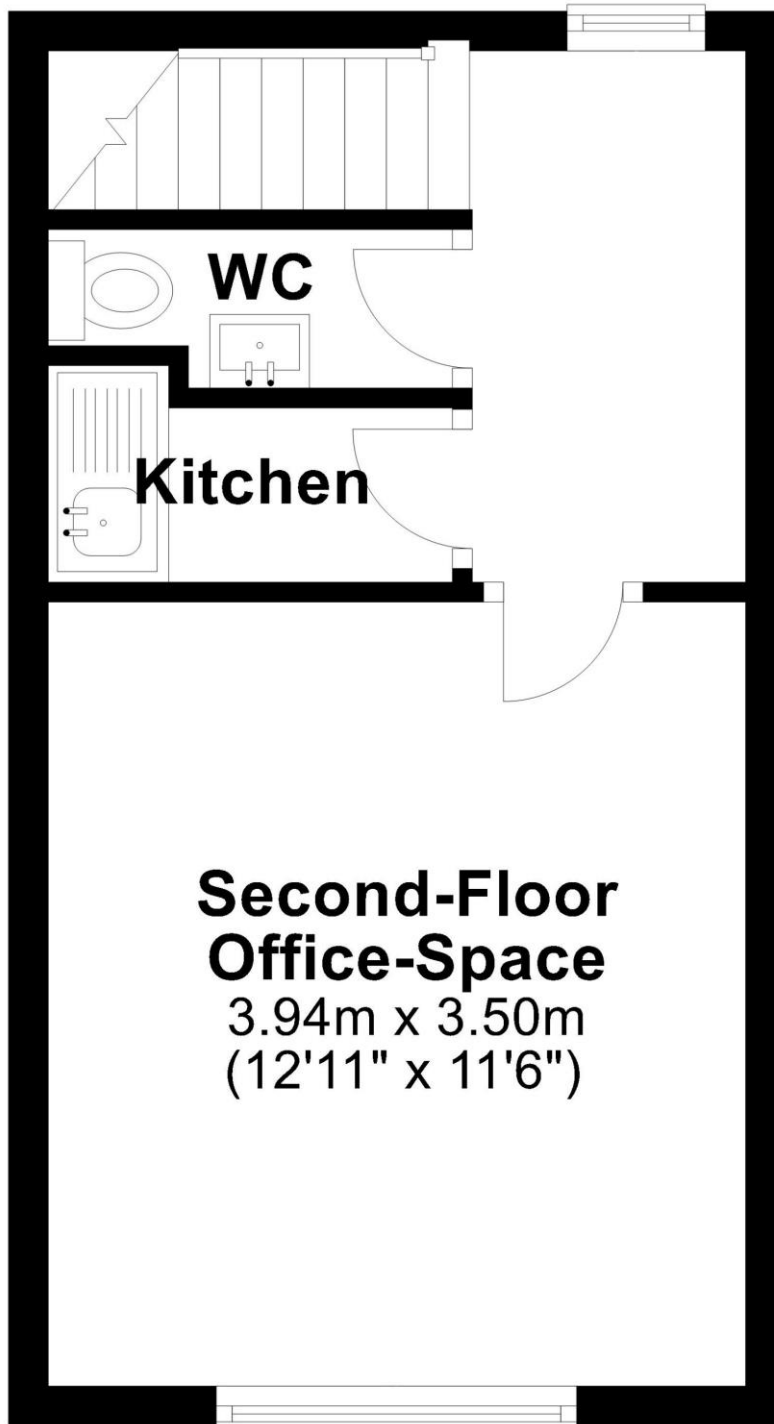


Total area: approx. 15.3 sq. metres (164.7 sq. feet)

For illustration purposes only - not to scale

Second Floor

Approx. 15.6 sq. metres (167.6 sq. feet)



Total area: approx. 15.6 sq. metres (167.6 sq. feet)
For illustration purposes only - not to scale